

SMONO[®]

Ready for Adventure[®]

EN
Manual
Smono 70's



≡ EST. 2016 ≡

CANATURA

HEMP  LIFE

Get the latest information from your Smono dealer. Please read the manual carefully before use. The manual is an essential component of the vaporizer and must be provided to the user.

Safety information

The device is intended for aroma therapy and should be used for dry herbs. This device is not intended for use with illegal substances and may only be used by adults over the age of eighteen. Keep out of reach of children. No other use is permitted. Maintenance and repair may only be carried out by qualified specialists. To avoid electrocution do not open the device yourself. The manufacturer and importers assume no responsibility for damages due to improper, faulty, illegal or unreasonable use. Never use electronic devices near water. The device must be kept from humidity and moisture to reduce the risk of electrocution. Please ensure that the USB cable is unobstructed and not bent. Only use accessories that have also been approved for that purpose by the manufacturer. Make sure that your plug is clean and in a fault free condition. Let your device cool completely before putting it away. The ventilation slits and air outlet of the vaporizer must not be held shut, covered or blocked during operation or the cooling phase.

Glass objects must never be dropped or put down too forcefully. Hot glass must not be exposed to cold water due to the danger of breakage. Cold heating and glass parts must be warmed to room temperature before being connected to the power. Glass must never be handled roughly. If the glass parts stick together tightly or are difficult to separate, carefully move them back and forth to make the parts easier to separate. If this happens, all parts must be cleaned. This electrical device, which contains glass and sensitive circuitry, must not be dropped as it could become faulty or break. The device must be placed on dry and level surfaces only. Never leave the device unsupervised during operating, charging or cooling.

This product is not approved as a medical device. Use the device only as intended. A damaged device must not be used. Packaging parts such as plastic bags, boxes, etc. must be kept away from children as they represent a potential hazard.

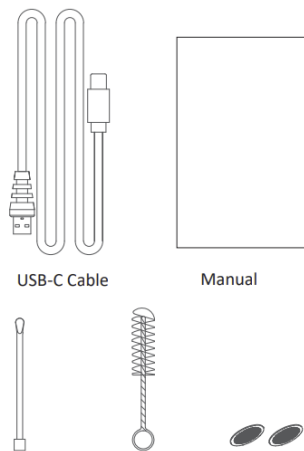
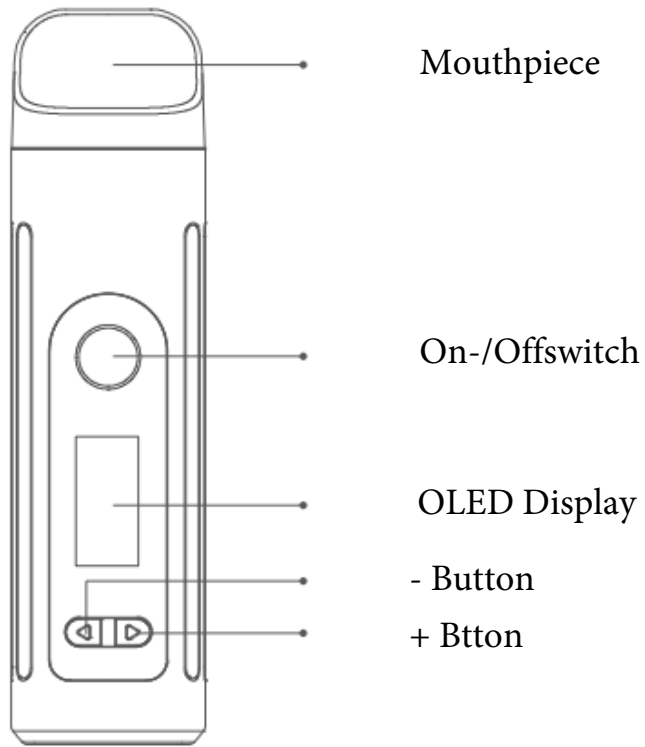
The information in this brochure should be considered as instructional and precautionary information only. This information does not contain or purport to be medical or approved advice. Also, it should not be consulted for Diagnostic purposes or treatment of a health problem, a health condition or ailments. Please contact your retailer, if you have any problems with the device or further questions.

Unpacking

After unpacking, please check that all parts are in perfect condition. Packaging must be kept away from children as it could be hazardous.

Please keep the manual for reference purposes.

Overview



Specification

OLED DISPLAY

Smono 70's OLED Display indicates temperature information, battery status and session timer

The Smono may not be used unsupervised. The Smono vaporizer may only be placed on heat resistant, flat, stable and solid surfaces; never place it on soft or easily flammable surfaces.

Botanical Material

If you have any health problems please consult your doctor before using the Smono vaporizer. In particular allergic reactions to botanical components are possible. Please only use plant parts that have been tested according to the guidelines of the European Pharmacopoeia (or comparable) for authenticity, purity and pathogens. Such plants or parts of plants can be purchased in a pharmacy.

To achieve an optimal result you can alter the vapour temperature and density. Vapour that is too dense and excessively high temperatures can impair the pure flavour. To release as much aroma from the botanical components as possible without impairing the flavour, the herbs should be ground as finely as possible. We recommend a high quality herb mill (grinder).

Irrespective of the temperature, vapour density and composition of the herbs, the vaporizing process should be repeated a few times until all the aroma and fragrances are released fully. If no more vapour is forming at the highest temperature, the vaporizing process has finished.

Smono Warranty

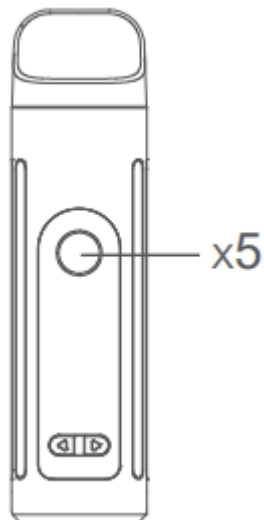
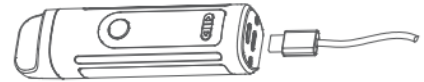
The manufacturer's warranty for the Smono is 2 years. Please register your Smono within 90 days from purchase at www.smono.shop to extend the warranty by a year.

The warranty begins on the day the buyer receives the Smono.

Charge

The charging time of the 2300 mAh battery depends on its age. A new empty battery takes about 2 hours to charge. Please charge the battery fully before using it for the first time. The Display shows when the Smono is fully charged. Do not leave unattended while charging. Please do not use the device while it is charging.

Quick Battery check: To see the charge status, press the On-/Offswitch when the device is off. The battery icon shows the current charge. symbolizes an empty battery



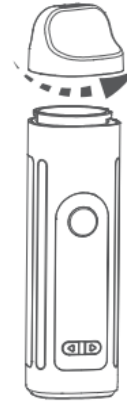
On/Off

Press On-/ Offswitch 5x rapidly. Before the first use, please set your Smono to the highest temperature to burn off any residue

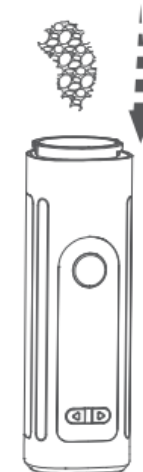
Filing the chamber

Please only fill the device when it is turned off and cool.

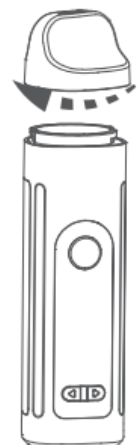
1. Remove mouthpiece.



2. Fill chamber loosely with herbs. If the chamber is only partially filled, the herbs can slide about so that the hot air flows past the herbs without releasing the aroma fully and efficiently. Please do not compress the herbs too much as this will impede the airflow.



3. Reattach the mouthpiece.



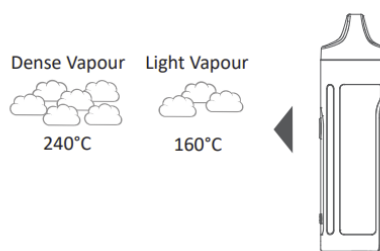
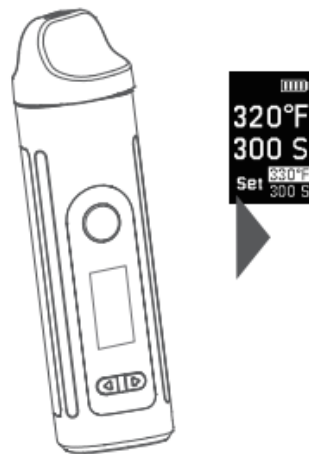
Celsius/Fahrenheit

When the device is on, the cursor position is at "SET". To change Celsius/Fahrenheit press On-/Offswitch and "-" 3 seconds simultaneously.



Setting the temperature

When the device is on, the Display will show the current temperature. The cursor position is at "SET". Press "+" or "-" to adjust temperature. The Smono will vibrate, signaling that it reached the desired temperature. Inhale the vapour slowly.

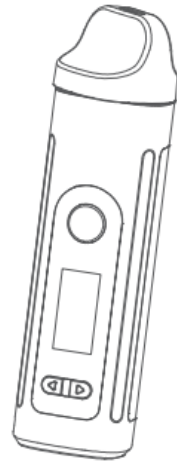
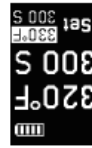


If the vapour intensity is very high, the concentration of the aromas and flavours can cause irritation of the airways. In this case you should lower the temperature to reduce the intensity of the vapour. More information can be found in the section "Botanical material".

Flip display

Press and hold On-/Offswitch and "+" button 3 seconds consecutively to flip the Display.

ay



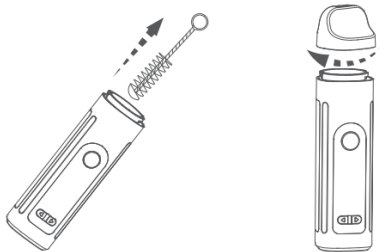
Timer Settings

old On-/Offswitch 3 seconds until cursor position is at "SET" (S). Press "+" or "-" to adjust timer.

How to clean

When the vapours cool down, they inevitably leave residue in the mouthpiece and the herb chamber. These parts must be thoroughly cleaned regularly to ensure proper functioning and a good taste. We recommend a quick clean after every use. Please only clean your Smono when it is completely cool.

1. Remove the mouthpiece and empty out the chamber using the filling tool.

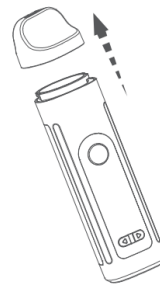


2. Use the cleaning brush to remove the remaining residue from chamber and reattach the mouthpiece.

To completely remove any residue in the Smono, please use a cotton bud or paper towel. To prevent damage to the vaporizer, we recommend using an alcohol-free, gentle vaporizer cleaner such as LaPilu™ or the Smono Cleaner. Please keep all electrical parts dry. Before assembling the mouthpiece and filters, let all the parts dry well.

Change Filter

1. Remove the mouthpiece from the device.



2. Pull out the filter from the mouthpiece.



3. Pull off the ceramic filter and screen from the silicon holder.



4. Insert a replacement of ceramic filter, screen and silicon holder.



5. Insert the filter back into the mouthpiece

Liability

Please note: All handling of the products requires precise knowledge of and adherence to this manual. Liability for the safe functioning of the products is transferred to the user if any action is performed which does not correspond to the intended use. Proper use involves only botanical components listed in the section "Botanical material". If the instructions contained in this manual are not followed, the liability of Reinhart GmbH & Co. KG ceases.

CE Declaraon of Conformity

According to EU regulaon 765/2008, this product (the Smono 70's) fulfils requirements.
WEEE

To protect the environment, this device should not be disposed of in household waste at the end of its service life. Disposal should be by takeaway customer service or locally available return and collecon systems.

The WEEE guideline serves to reduce the increasing quantity of electronic waste from electrical and electronic devices that can no longer be used.

The registered manufacturer number for this device is:

WEEE reg. no. DE 47152642
Sung-ear.de



EST. 2016

CANATURA

HEMP  LIFE

Canatura - Online store with the best
hemp products for your health

www.canatura.com/en

Copyright reserved